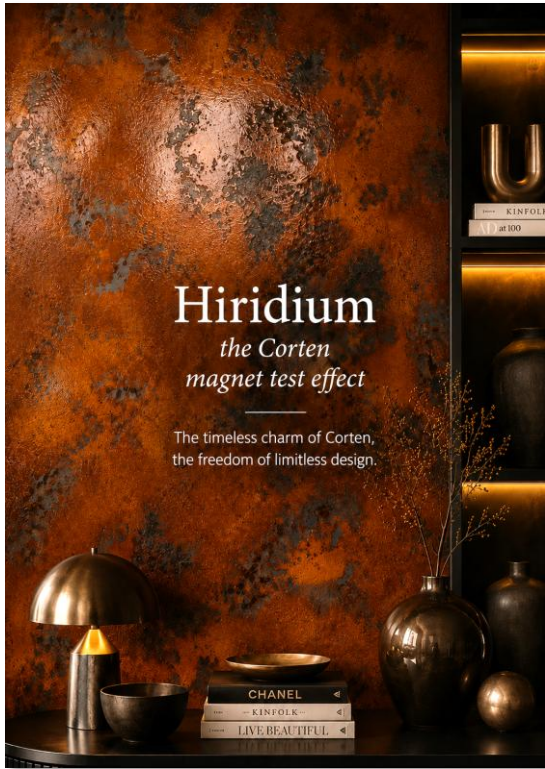


# HIRIDIUM

Issued on July 31, 2024 - Rev. No. 1 of July 31, 2024

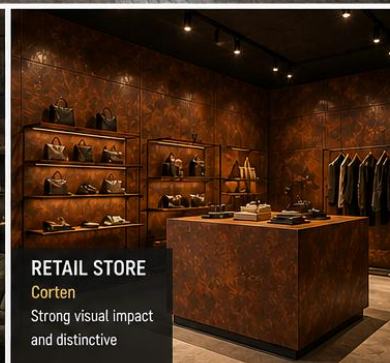


# HIRIDIUM

CONTINUOUS METALLIC DECORATIVE COATING FOR WALLS AND HIGH-END SURFACES

SEAMLESS CONTINUOUS SURFACES  
REALISTIC METALLIC EFFECT  
CONTEMPORARY ARCHITECTURAL AESTHETICS

- AUTHENTIC METALLIC EFFECT
- SEAMLESS CONTINUOUS SURFACE
- HIGH RESISTANCE AND DURABILITY
- IDEAL FOR RESIDENTIAL AND COMMERCIAL SPACES



AVAILABLE FINISHES



GRAPHENE

CORTEN



SEAMLESS CONTINUOUS SURFACE



REALISTIC METALLIC EFFECT



HIGH RESISTANCE AND DURABILITY



IDEAL FOR RESIDENTIAL AND COMMERCIAL SPACES

**NIKKOLOR**  
ITALIA

www.nikkolor.net

# HIRIDIUM

## DESCRIPTION

In our research into new materials and technologies for creating high-performance finishes, our laboratory has synthesized a new, ultra-small zirconium-based particle. Thanks to the nano-resin treatment present in the product, a finish with exceptional technical and physical properties can be achieved.

## FIELDS OF USE

- ✓ Ideal for covering interior walls and ceilings for high-end design and for the renovation of public and private spaces, shopping centers, shops, bars, villas, and residences.
- ✓ The unique feature of the completely seamless design allows for seamless solutions, a true innovation in modern architecture, a refined finish capable of creating unique textures, transforming surfaces into real metal of extraordinary beauty and absolute exclusivity.

## FEATURES

- ✓ Realistic and natural metal appearance
- ✓ Seamless, seamless surface
- ✓ Highly resistant and durable
- ✓ Can be used on interior and exterior walls, furniture, and decorative panels

## PREPARATION

- ✓ Pour the metal powder "Comp. B" into the "Comp. A" in small doses and mix using an electric mixer with a whisk attachment until a smooth, lump-free paste is obtained. If necessary, add drinking water until a soft paste is obtained.

## SUBSTRATE PREPARATION AND APPLICATION OF HIRIDIUM CORTEN

- ✓ Substrates must be dry, solid, and free of dust, paint, wax, oil, loose, and weathered particles.
1. Apply a single coat of NK Primer evenly over the entire surface to be treated using a short-haired roller and a brush.
  2. Let dry for 24 hours (+20°C).
  3. Apply a single coat of Hiridium, approximately 1 mm thick, using a stainless-steel trowel, evenly and evenly over the entire surface to be treated.
  4. Let the product dry for 24 hours (+20°C).
  5. Apply a single coat of Patina in the chosen color (Blue, Green, Red) using a soft sponge.

## SUBSTRATE PREPARATION AND APPLICATION OF HIRIDIUM GRAPHENE

- ✓ Substrates must be dry, solid, and free of dust, paint, wax, oil, loose, and weathered particles.
1. Apply a single coat of NK Primer evenly over the entire surface to be treated. Treat using a short-haired roller and a brush.
  2. Let dry for 24 hours (+20°C).
  3. Apply a single coat of Hiridium, approximately 1 mm thick, using a stainless-steel trowel, evenly and smoothly over the entire surface to be treated.
  4. Let the product dry for 24 hours (+20°C).
  5. Apply a generous layer of ProteKto EcoSilan using a short-haired mohair roller.
  6. Let it dry for 24 hours (+20°C).

# HIRIDIUM

## HIRIDIUM TECHNICAL DATA

- ✓ Viscosity (UNI EN ISO 3219): ~130,000 mPa\*s;
- ✓ Specific Weight (UNI EN ISO 2811-1): ~3 kg (Comp. A 1.5 kg - Comp. B 1.5 kg)
- ✓ Dilution after dosing: Ready to use, or in some cases, drinkable water can be added in the percentage necessary for the desired application.
- ✓ Coverage: ~10 m<sup>2</sup> (coverage may decrease significantly depending on the texture applied)
- ✓ pH: ~9.00
- ✓ Recommended tools for application: trowel, brush, roller, and spray gun
- ✓ Drying time: ~8 hours (+20°C)
- ✓ Drying time before polishing: ~12 hours (+20°C)
- ✓ Total hardening: ~72 hours (+20°C)
- ✓ Packaging: Comp. A 1.5 kg and Comp. B 1.5 kg
- ✓ Water and UV resistance without protection: at least ten days after final polishing
- ✓ Classification by end use (UNI EN 1062.1-4.1): Decoration and Protection
- ✓ Classification by binder type (UNI EN 1062.1-4.2): Non-resin
- ✓ Classification by state (UNI EN 1062.1-4.3): Aqueous dispersion
- ✓ VOC classification: Complies with Legislative Decree No. 161 of 27/03/2006 (Implementation of Directive 2004/42/EC)
- ✓ Store in tightly closed original containers in a dry place between +5°C and +30°C

## PATINA TECHNICAL DATA

- ✓ Appearance: Liquid
- ✓ Color: Blue, green, and red
- ✓ pH: ~3/3.2
- ✓ Specific gravity: 1000 ± 40 g/l (at 20°C)
- ✓ Solids by weight: 19.8 ± 2%
- ✓ Coverage: 8/12 m<sup>2</sup>/L Depending on the quantity used
- ✓ Application: Brush, sponge, spray bottle, airless
- ✓ Package: 1 Lt

## OTHER INSTRUCTIONS

- ✓ It is recommended to avoid direct contact with highly aggressive substances, such as strongly acidic or basic substances and strongly oxidizing substances (e.g., hair dyes), which can alter the color of the flooring.
- ✓ Vulcanized plastics with a high plasticizer content (e.g., tires) may mark the floor if left in prolonged contact with the flooring.
- ✓ The photographic images in the catalog and on the website, as well as the colors shown in the samples, are purely indicative.
- ✓ Use materials from a single production batch for each project.

## MAIN CHARACTERISTICS

- ✓ Store in a dry, dry place, away from sunlight.
- ✓ Do not apply to dusty surfaces.
- ✓ Do not apply to wet surfaces.
- ✓ Do not apply to frozen surfaces.
- ✓ Do not apply to damp surfaces and repairs.
- ✓ Do not apply in direct sunlight (outdoor application).

# HIRIDIUM

- ✓ Do not apply in strong winds (outdoor application)
- ✓ Do not apply in rain (outdoor application)
- ✓ Make sure the temperature does not drop below +10°C before application
- ✓ Do not apply where rising damp or infiltration moisture has been detected
- ✓ Consult the local weather forecast (outdoor application)
- ✓ Protect windows, doors, etc. well before application

## WARNINGS

- ✓ Product for professional use; comply with national standards and regulations.
- ✓ Apply when the surface temperature is above +10°C.
- ✓ Apply to permanently dry surfaces.
- ✓ Protect from direct sunlight and drafts for the first 6 hours.
- ✓ Do not apply to dirty or loose surfaces.
- ✓ Dispose of in accordance with current regulations.
- ✓ Materials exposed to temperature changes (due to transportation, storage, construction site, etc.) may cause substantial changes to the product (e.g., crystallization, partial hardening, fluidification, accelerated or delayed curing).
- ✓ In most cases, In some cases, restoring the products to optimal conditions will also restore their original characteristics.
- ✓ Protect surfaces and objects in the installation area from accidental contact.
- ✓ If necessary, request the safety data sheet or contact Nikkolor Italia Technical Customer Service at +39 333 861 8963.
- ✓ [www.nikkolor.net](http://www.nikkolor.net)

## PERFORMANCE CHARACTERISTICS

- ✓ Tensile strength (EN 13892-2): 38 N/mm<sup>2</sup> after 15 days
- ✓ Flexible strength (EN 13892-2): 36 Nm after 15 days
- ✓ Impact resistance (UNI EN ISO 6272-1): 0.500 Nm/501/m
- ✓ Permeability resistance (UNI EN 1062-3): 0.0001 kg/m<sup>2</sup>\*h0.5 after 5 days
- ✓ Reaction to fire (EN 13501-1): CLASS 1 15 days
- ✓ Adhesion strength (EN 13892-8): 6 N/mm<sup>2</sup> after 15 days
- ✓ Recommended minimum/maximum thickness for the system is 1 mm
- ✓ Slip resistance: DIN 51097 Class A method 19° ≤ α < 27° - Anti-slip (DIN 51130): R11

Data measured at +20°C, 65% RH, and no ventilation.

They may vary depending on specific construction site conditions: temperature, ventilation, and substrate absorbency. This information is current as of January 2026 and may be subject to additions and/or changes over time by Nikkolor Italia s.r.l. For any such updates, please consult the website [www.nikkolor.net](http://www.nikkolor.net)

Nikkolor Italia s.r.l. Therefore, it is only responsible for the validity, timeliness, and up-to-dateness of its information if taken directly from its website.

The technical data sheet is compiled to the best of our technical and application knowledge.

# HIRIDIUM

However, since we cannot directly influence construction site conditions and the execution of the work, these guidelines are general in nature and do not bind our company in any way.

We therefore recommend a preliminary test to verify the product's suitability for the intended use.

