

MARMORINO LIME

Issued on 05/02/2025 - Rev. No. 1 of 05/02/2025



MARMORINO LIME

MINERAL LIME-BASED COATING FOR INTERIORS WITH AN ESSENTIAL AND TEXTURED LOOK

LIVING MATTER. TIMELESS ELEGANCE.

- NATURAL AND TEXTURED EFFECT
- BREATHABLE AND ANTI-MOLD
- SEAMLESS FINISH
- HANDCRAFTED SLIGHTLY VARIEGATED TEXTURE
- AUTHENTIC AND SOPHISTICATED LOOK



LIVING ROOM
Natural and textured surface for unique and relaxing interiors



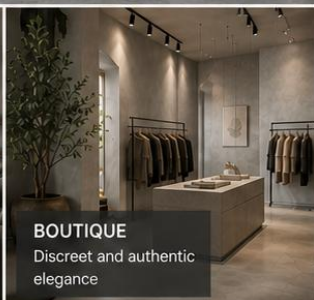
KITCHEN
Warm tones and natural harmony



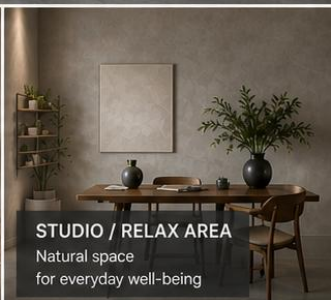
BEDROOM
Calm and enveloping atmosphere



OPEN SPACE
Visual continuity and lightweight feel



BOUTIQUE
Discreet and authentic elegance



STUDIO / RELAX AREA
Natural space for everyday well-being



BREATHABLE
Promotes a healthy indoor environment



NATURAL AND MINERAL
Made from carefully selected lime



HIGH ADHESION
Excellent grip on a wide range of surfaces



IDEAL FOR INTERIORS
Perfect for any room in the home or workspace



ECO-FRIENDLY (LOW VOC)
Respects the environment and indoor air quality

NIKKOLOR
ITALY

MARMORINO LIME

DESCRIPTION

Marmorino Lime is the most refined expression of Italian decorative art, a premium coating that combines the timeless elegance of Venetian tradition with the sophistication of contemporary design.

COMPOSITION

✓ Made with natural lime, organic binders in aqueous solution, very fine mineral fillers, and additives, Marmorino Lime is not only synonymous with beauty, but also with sustainability and ecology. Its eco-friendly composition promotes surface breathability, contributing to the well-being of spaces and reducing environmental impact.

FIELDS OF USE

✓ Ideal for covering interior walls and ceilings intended for high-end design and for the renovation of public and private spaces, shopping centers, shops, bars, villas, and residences.

PERFORMANCE CHARACTERISTICS

- ✓ Natural, characteristic lime appearance
- ✓ Seamless, seamless surface
- ✓ Highly breathable and durable
- ✓ Can be applied to interior and exterior walls, furniture, and decorative panels

SUBSTRATE PREPARATION

- ✓ Substrates must be dry, solid, and free of dust, paint, wax, oil, and loose particles.
1. Apply a single coat of Primer NK evenly over the entire surface to be treated using a short-haired roller and a brush.
 2. Let dry for 12 hours (+20°C).

PREPARATION AND COLORING

1. Mix Marmorino Lime thoroughly using a mechanical mixer until a smooth, lump-free paste is obtained.
2. Add the required amount of toner and mix until the colorant dissolves.
3. Let the product rest for 10 minutes.

APPLICATION WITH CREAM WAX FINISH

1. Apply a first coat of Marmorino Lime using a stainless-steel trowel, evenly over the entire surface. Surface
2. Let dry for 12 hours (+20°C)
3. Apply a second coat of Marmorino Lime over approximately 3-4 m², then go back and sand the surface until it is smooth and level by tilting the stainless-steel trowel.
4. Let dry for 24 hours (+20°C)
5. Apply a single coat of Cream Wax over the entire surface using a stainless-steel trowel.
6. Let dry for 12 hours (+20°C)
7. Polish the entire Cream Wax-treated surface using an electric polisher with the appropriate soft wool pad.

MARMORINO LIME

APPLICATION WITH SILOXANE VELATURA FINISH

1. Apply a first coat of Marmorino Lime using a stainless-steel trowel, evenly over the entire surface.
2. Let dry for 12 hours (+20°C).
3. Apply a second coat of Marmorino Lime over approximately 3-4 m². Go back and smooth the surface until it is smooth and level, tilting the stainless-steel trowel.
4. Let dry for 24 hours (+20°C).
5. Apply a first coat of Velatura Silossanica diluted 70% with drinkable water using a soft-bristled brush.
6. Let dry for 24 hours (+20°C).
7. Apply a second coat of colored Velatura Silossanica diluted to a maximum of 10% with drinkable water using a soft-bristled brush over 2-3 m². Go back and blend the color using a half-moon sponge to recreate the characteristic chiaroscuro of Velatura.
8. Let dry for 24 hours (+20°C)

APPLYING WITH PROTEKTO ECOSILAN FINISH

1. Apply a first coat of Marmorino Lime using a stainless-steel trowel, evenly over the entire surface.
2. Let dry for 12 hours (+20°C).
3. Apply a second coat of Marmorino Lime over approximately 3-4 m². Go back and smooth the surface until it is smooth and level by tilting the stainless-steel trowel.
4. Let dry for 24 hours (+20°C).
5. Apply a generous coat of ProteKto EcoSilan using a short-haired mohair roller.
6. Let dry for 24 hours (+20°C).

TECHNICAL DATA

- ✓ Appearance: Paste
- ✓ Color: Characteristic white
- ✓ Specific weight (UNI EN ISO 2811-1): 1.6 kg/L
- ✓ Viscosity (UNI EN ISO 3219): ~ 130,000 mPa*s
- ✓ pH: >12
- ✓ Coverage: 1.6 kg/m² in two coats, depending on the substrate and applied thickness.
- ✓ Use temperature: +10°C and +30°C
- ✓ Touch dry: 4 hours at +20°C
- ✓ Overcoating: 12 hours at +20°C
- ✓ Full hardening: ~48 hours at +20°C
- ✓ Storage: 24 months in a cool place, away from heat sources. (+10°C and +30°C)
- ✓ Colors obtainable with toner: 32 shades
- ✓ Packaging: 14 and 5 liters
- ✓ Classification by end use (UNI EN 1062.1 – 4.1): Decoration and protection
- ✓ Classification by type of binder (UNI EN 459-1:2001): Natural Hydraulic Limes
- ✓ Classification by state (UNI EN 1062.1 – 4.3): Aqueous dispersion
- ✓ VOC classification: Complies with Legislative Decree No. 161 of 27/03/2006 (Implementation of Directive 2004/42/EC)

MARMORINO LIME

- ✓ UNI 8681 classification: Single-component, chemically drying, matt, water-based finishing filler for masonry substrates; E4.C0.C2.A3.SA;
- ✓ Safety regulations: Marmorino Lime is not considered hazardous pursuant to the provisions of Directives 67/548/EEC and 1999/45/EC and subsequent amendments and additions;
- ✓ Transport information: Marmorino Lime is not considered hazardous pursuant to the current regulations regarding the transport of dangerous goods by road (ADR), rail (RID), sea (IMDG Code), and air (IATA);
- ✓ EUH210: Safety data sheet available upon request.

OTHER INSTRUCTIONS

- ✓ It is recommended to avoid direct contact with highly aggressive substances, such as strongly acidic or basic substances and strongly oxidizing substances (e.g., hair dyes), which can alter the color of the flooring.
- ✓ Vulcanized plastic materials with a high plasticizer content (e.g., tires) can mark the floor if left in prolonged contact with the flooring.
- ✓ The photographic images in the catalog and on the website, as well as the colors shown in the samples, are purely indicative.
- ✓ Use materials from a single production batch for each project.

MAIN CHARACTERISTICS

- ✓ Store in a dry, dry place, away from sunlight.
- ✓ Do not apply on dusty surfaces.
- ✓ Do not apply on wet surfaces.
- ✓ Do not apply on frozen surfaces.
- ✓ Do not apply on still-damp surfaces and repairs.
- ✓ Do not apply in strong sunlight (outdoor application).
- ✓ Do not apply in strong wind (outdoor application).
- ✓ Do not apply in rain (outdoor application).
- ✓ Make sure the temperature does not drop below +10°C before application. Application
- ✓ Do not apply where rising or infiltrating damp has been confirmed.
- ✓ Consult the local weather forecast (outdoor application).
- ✓ Properly cover fixtures, doors, etc. before application.

WARNINGS

- ✓ Product for professional use; comply with national standards and regulations.
- ✓ Apply when the surface temperature is above +10°C.
- ✓ Apply to permanently dry surfaces.
- ✓ Protect from direct sunlight and drafts for the first 6 hours.
- ✓ Do not apply to dirty or loose surfaces.
- ✓ Dispose of in accordance with applicable regulations.
- ✓ Materials exposed to temperature changes (due to transportation, storage, construction site, etc.) may cause substantial changes to the product (e.g., crystallization, partial hardening, fluidification, accelerated or delayed curing).
- ✓ In most cases, restoring the products to optimal conditions will also restore their original characteristics.

MARMORINO LIME

- ✓ Protect surfaces and objects in the installation area from accidental contact.
- ✓ If necessary, request the safety data sheet or contact Nikkolor Italia Technical Customer Service at +39 333 861 8963
- ✓ www.nikkolor.net

Data measured at +20°C, 65% RH, and no ventilation. They may vary depending on specific construction site conditions: temperature, ventilation, and substrate absorbency.

This information is current as of January 2026 and may be subject to additions and/or changes over time by Nikkolor Italia s.r.l. For any such updates, please consult the website www.nikkolor.net.

Nikkolor Italia s.r.l. is therefore responsible for the validity, timeliness, and up-to-dateness of its information only if taken directly from its website.

The technical data sheet is prepared based on our best technical and application knowledge.

However, since we cannot directly influence construction site conditions and the execution of the work, these guidelines are general in nature and do not bind our company in any way.

We therefore recommend a preliminary test to verify the product's suitability for the intended use.

