

## ArchiMetal

The strength of metal,  
the elegance of architecture.

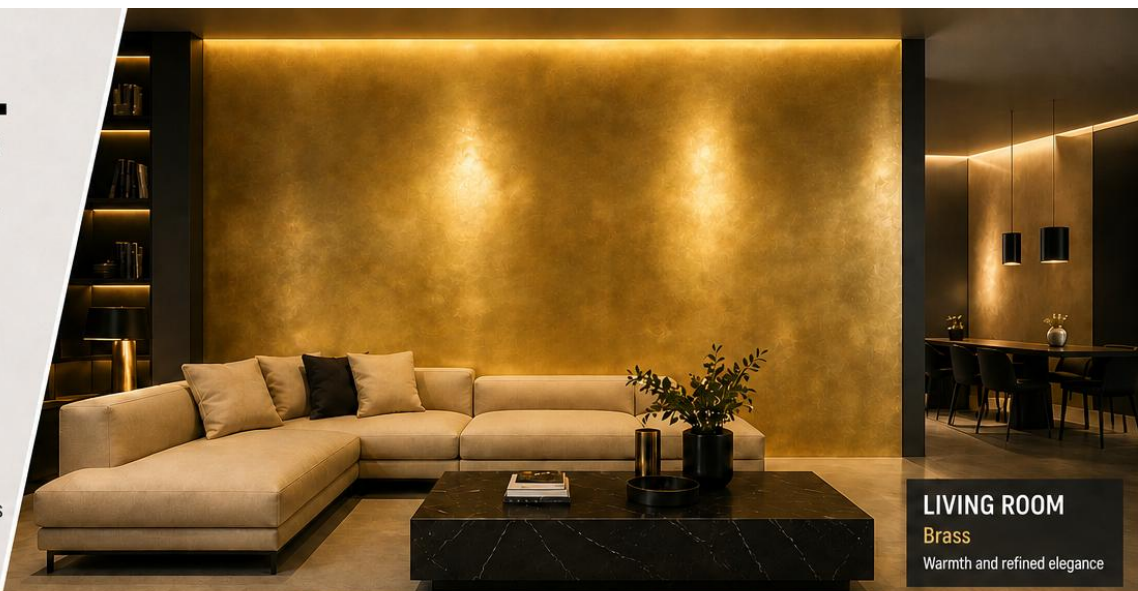


# ARCHIMETAL

CONTINUOUS METALLIC DECORATIVE COATING  
FOR HIGH-END INTERIOR WALLS

JOINTLESS SURFACES  
REALISTIC METALLIC EFFECT  
CONTEMPORARY ARCHITECTURAL  
AESTHETICS

-  AUTHENTIC METALLIC EFFECT
-  CONTINUOUS SURFACE WITHOUT JOINTS
-  HIGH RESISTANCE AND DURABILITY
-  IDEAL FOR RESIDENTIAL AND COMMERCIAL SPACES



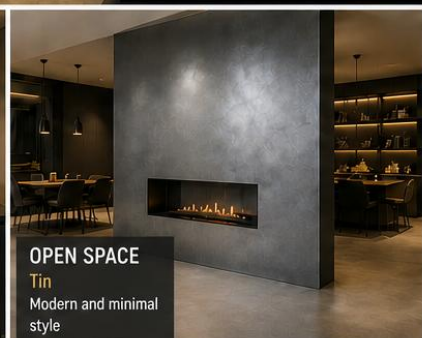
**LIVING ROOM**  
Brass  
Warmth and refined elegance



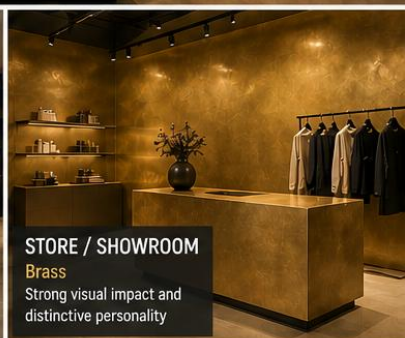
**BATHROOM**  
Bronze  
Warm, enveloping and sophisticated



**KITCHEN**  
Copper  
Elegant and contemporary reflections



**OPEN SPACE**  
Tin  
Modern and minimal style



**STORE / SHOWROOM**  
Brass  
Strong visual impact and distinctive personality



AVAILABLE FINISHES

BRASS BRONZE COPPER TIN



CONTINUOUS SURFACE WITHOUT JOINTS



REALISTIC METALLIC EFFECT



HIGH RESISTANCE OVER TIME



IDEAL FOR RESIDENTIAL AND COMMERCIAL SPACES

**NIKOLOR**  
ITALY

www.nikkolor.net

# ARCHIMETAL

## DESCRIPTION

The extraordinary creativity and emotional impact of Italian design blend with the mastery of timeless tradition, giving rise to a new series of warm, bold shades that reflect luxury and elegance. The chemical composition created and developed in our laboratories, composed primarily of non-metallic alloys, recycled nanoresins, and fluid zirconium, represents a technological leap never achieved before. Available in four different versions: tin, brass, bronze, and copper.

## APPLICATIONS

- ✓ Perfect for residential spaces, shops, showrooms, hotels, and contract environments where a strong and refined visual impact is desired.

## MAIN FEATURES

- ✓ Realistic and natural metal look
- ✓ Seamless, seamless surface
- ✓ Highly resistant and durable
- ✓ Can be used on interior and exterior walls, furniture, and decorative panels

## PREPARATION AND MIXING

- ✓ Pour the "Comp B" metal powder into the "Comp A" mixture in small doses and mix using an electric mixer with a whisk attachment until a smooth, lump-free paste is obtained. If necessary, add drinking water until a soft paste is obtained.

## PREPARATION, COLORING, AND MIXING

- ✓ Substrates must be dry, solid, and free of dust, paint, wax, oil, loose particles, and weathered surfaces.
1. Apply a single coat of Primer NK evenly over the entire surface to be treated using a short-haired roller and a brush.
  2. Let the product dry for 24 hours (+20°C).
  3. Apply a single coat of ArchiMetal, approximately 1 mm thick, using a stainless-steel trowel, evenly and evenly over the entire surface to be treated.
  4. Let the product dry for 24 hours (+20°C).
  5. Polish the surface using an electric polisher with a 1000-grit disc.
  6. Polish the surface again as before, but using a 3000-grit disc.
  7. Apply a single coat of ProteKto EcoSilan using a brush.
  8. Let it dry for 1/2 hour (+20°C).
  9. Polish the surface again with a 3000-grit polishing disc.

## TECHNICAL DATA

- ✓ ArchiMetal Viscosity (UNI EN ISO 3219): ~180,000 mPa\*s
- ✓ ArchiMetal Specific Gravity (UNI EN ISO 2811-1): ~3 kg (Component A 1.5 kg - Comp. B 1.5 kg)
- ✓ ArchiMetal Coverage: ~9 m<sup>2</sup> (spatula effect)
- ✓ ArchiMetal Dilution: Ready to use or dilutable 20% to 70% with potable water depending on the application
- ✓ ArchiMetal pH: ~9.00
- ✓ Tin Pot Life: 3 months in original containers with clean edges
- ✓ Brass Pot Life: 12 months in original containers with clean edges

# ARCHIMETAL

- ✓ Bronze Pot Life: 12 months in original containers with clean edges
- ✓ Copper Pot Life: 12 months in original containers with clean edges
- ✓ Drying Time: ~12 hours
- ✓ Full Hardening: ~72 hours
- ✓ Use Temperature: +10°C - +30°C
- ✓ Packaging: Comp. A 1.5 kg and Comp. B 1.5 kg
- ✓ ArchiMetal Water and UV Resistance: 10 days from final polishing
- ✓ Classification by End Use (UNI EN 1062.1-4.1): Decoration and Protection
- ✓ Classification by Binder Type (UNI EN 1062.1-4.2): Nanoresin
- ✓ Classification by State (UNI EN 1062.1-4.3): Aqueous Dispersion
- ✓ VOC Classification: Compliant to Legislative Decree no. 161 of 27/03/2006 (Implementation of Directive 2004/42/EC)

## OTHER INSTRUCTIONS

- ✓ It is recommended to avoid direct contact with highly aggressive substances, such as strongly acidic or basic substances and strongly oxidizing substances (e.g., hair dyes), which can alter the color of the flooring.
- ✓ Vulcanized plastics with a high plasticizer content (e.g., tires) may mark the floor if left in prolonged contact with the flooring.
- ✓ The photographic images in the catalog and on the website, as well as the colors shown in the samples, are purely indicative.
- ✓ Use materials from a single production batch for each project.

## MAIN CHARACTERISTICS

- ✓ Store in a dry, dry place, away from sunlight
- ✓ Do not apply to dusty surfaces
- ✓ Do not apply to wet surfaces
- ✓ Do not apply to frozen surfaces
- ✓ Do not apply to still-damp surfaces and repairs
- ✓ Do not apply in strong sunlight (outdoor application)
- ✓ Do not apply in strong winds (outdoor application)
- ✓ Do not apply in rain (outdoor application)
- ✓ Make sure the temperature does not drop below +10°C before application
- ✓ Do not apply where rising or seeping damp has been confirmed
- ✓ Check the local weather forecast (outdoor application)
- ✓ Properly cover window frames, doors, etc. before application

## WARNINGS

- ✓ Product for professional use; comply with national standards and regulations
- ✓ Apply when the substrate temperature is above +10°C
- ✓ Apply to permanently dry substrates
- ✓ Protect from direct sunlight and drafts for the first 6 hours
- ✓ Do not apply to dirty or loose surfaces
- ✓ Dispose of in accordance with applicable regulations
- ✓ Materials exposed to temperature changes (due to transportation, storage, construction site, etc.) may cause substantial changes to the product (e.g., crystallization, partial hardening, fluidification, accelerated or delayed curing)

# ARCHIMETAL

- ✓ In most cases, restoring the products to optimal conditions will also restore their original characteristics
- ✓ Protect surfaces and objects in the application area from accidental contact
- ✓ If necessary, request the safety data sheet or contact Nikkolor Italia Technical Customer Service at +39 333 861 8963
- ✓ [www.nikkolor.net](http://www.nikkolor.net)

## PERFORMANCE CHARACTERISTICS

- ✓ Tensile strength (EN 13892-2): 38 N/mm<sup>2</sup> after 15 days
- ✓ Flexible strength (EN 13892-2): 36 Nm after 15 days
- ✓ Impact resistance (UNI EN ISO 6272-1): 0.500 Nm/501/m
- ✓ Permeability resistance (UNI EN 1062-3): 0.0001 kg/m<sup>2</sup>\*h<sup>0.5</sup> after 5 days
- ✓ Reaction to fire (EN 13501-1) CLASS 1 after 15 days
- ✓ Adhesion strength (EN 13892-8): 6 N/mm<sup>2</sup> after 15 days
- ✓ The minimum/maximum recommended thickness for the cycle is 1 mm
- ✓ Slip resistance: DIN 51097 Class A method 19° ≤ α < 27° - Non-slip (DIN 51130): R11

Data measured at +20°C, 65% RH, and no ventilation. They may vary depending on specific construction site conditions: temperature, ventilation, and substrate absorbency.

This information is current as of January 2026 and may be subject to additions and/or changes over time by Nikkolor Italia s.r.l. For any such updates, please consult the website [www.nikkolor.net](http://www.nikkolor.net).

Nikkolor Italia s.r.l. is therefore responsible for the validity, timeliness, and up-to-dateness of its information only if taken directly from its website. The technical data sheet is prepared based on our best technical and application knowledge.

However, as we cannot directly influence construction site conditions and the execution of work, it represents general information that does not bind our company in any way. We therefore recommend a preliminary test to verify the suitability of the product for the intended use.

